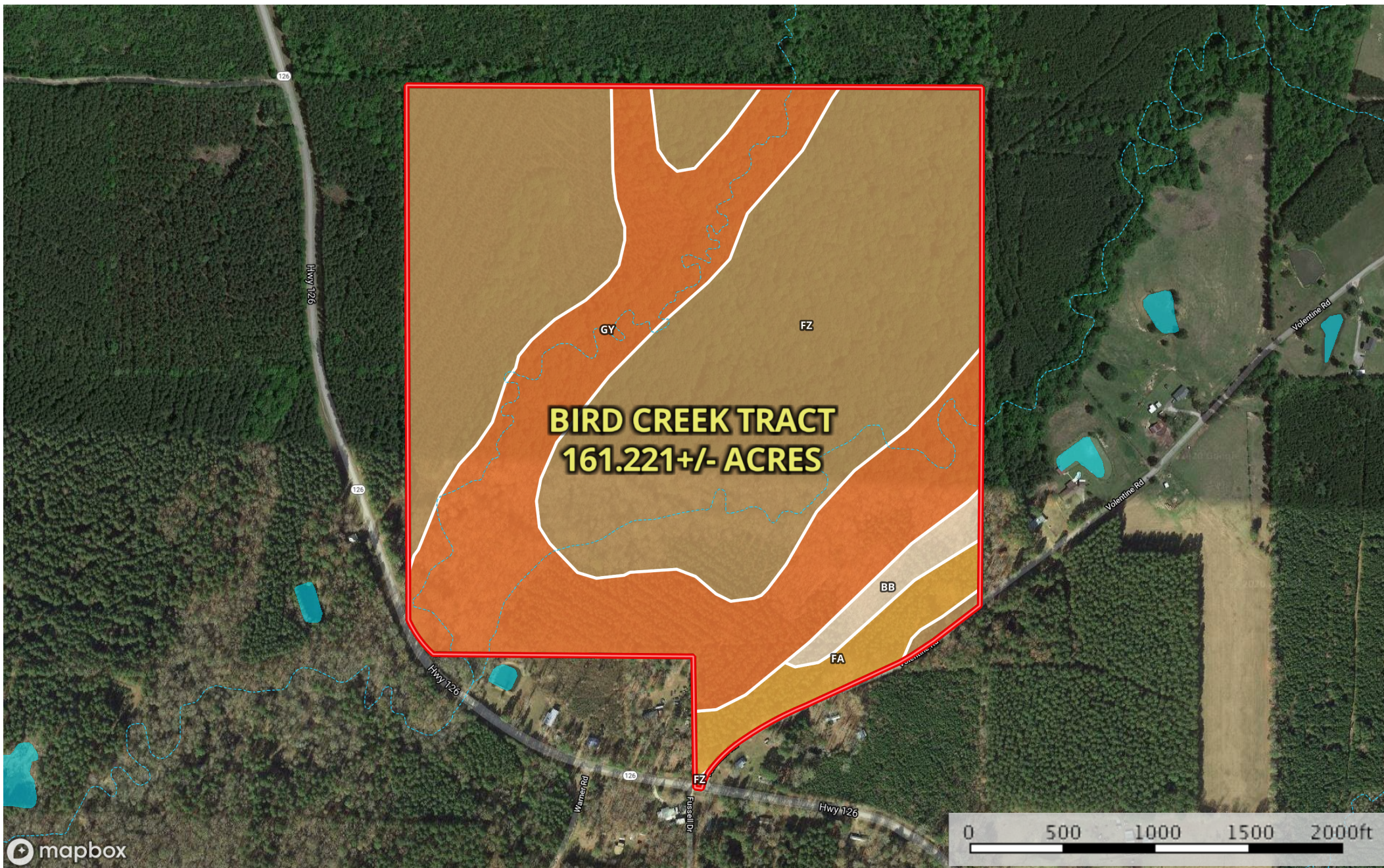


**Bird Creek Tract**  
Caldwell Parish, Louisiana, 161 AC +/-



- Boundary
- Stream, Intermittent
- River/Creek
- Water Body

|  Boundary 161.2 ac









SOIL CODE	SOIL DESCRIPTION	ACRES	%	CAP
FZ	Frizzell-Guyton-Providence association, 0 to 2 percent slopes	97.2	60.3	2e
GY	Guyton and Ouachita silt loams, frequently flooded	53.8	33.34	5w
Bb	Bayoudan clay, 3 to 8 percent slopes	3.3	2.04	6e
Fa	Falkner silt loam	7.0	4.32	2w
TOTALS		161.2	100%	3.08

## Capability Legend

Increased Limitations and Hazards

Decreased Adaptability and Freedom of Choice Users

Land, Capability

								
	1	2	3	4	5	6	7	8
'Wild Life'	•	•	•	•	•	•	•	•
Forestry	•	•	•	•	•	•	•	
Limited	•	•	•	•	•	•	•	
Moderate	•	•	•	•	•	•		
Intense	•	•	•	•	•			
Limited	•	•	•	•				
Moderate	•	•	•					
Intense	•	•						
Very Intense	•							

## Grazing Cultivation

(c) climatic limitations (e) susceptibility to erosion

(s) soil limitations within the rooting zone (w) excess of water