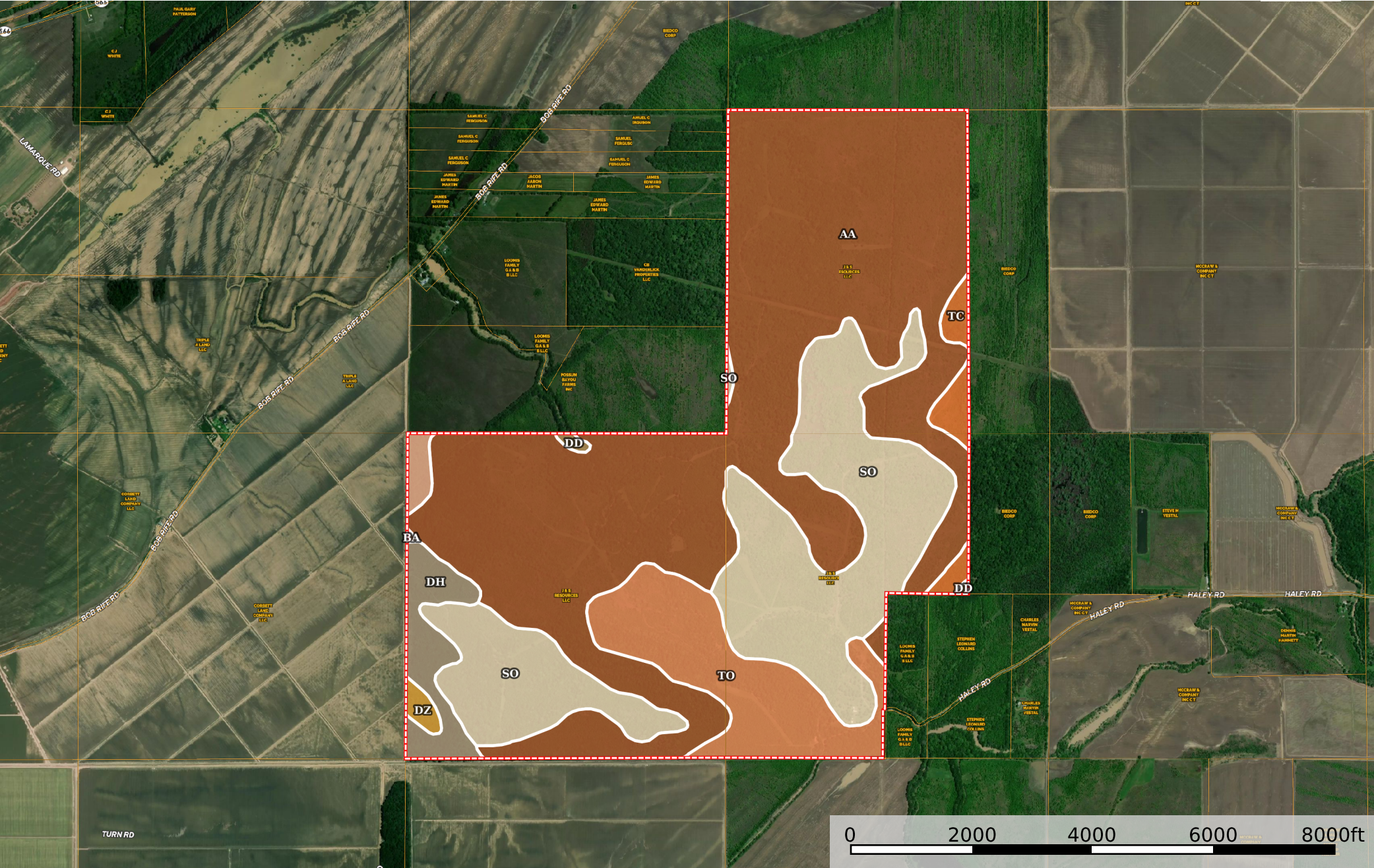



Opossum Bayou High Fence Tract  
Concordia Parish, Louisiana, 1536 AC +/-



 Boundary



## Boundary 1540.85 ac

SOIL CODE	SOIL DESCRIPTION	ACRES	%	CPI	NCCPI	CAP
Aa	Alligator clay	882.09	57.25	0	41	3w
So	Sharkey clay, 0 to 1 percent slopes, frequently flooded	397.65	25.81	0	8	5w
To	Tensas-Alligator complex, undulating	157.75	10.24	0	58	3w
Dh	Dundee-Alligator-Tensas complex, gently undulating	54.43	3.53	0	72	2w
Tc	Tensas silty clay, 0 to 1 percent slopes, rarely flooded	27.16	1.76	0	43	3w
Ba	Tensas silty clay loam	11.22	0.73	0	51	3w
DZ	Dowling clay, 0 to 1 percent slopes, frequently flooded, tensas	7.35	0.48	0	10	7w
Dd	Dundee loam	3.2	0.21	0	85	2w
TOTALS		1540.85(*)	100%	-	35.37	3.5

(\*) Total acres may differ in the second decimal compared to the sum of each acreage soil. This is due to a round error because we only show the acres of each soil with two decimal.

### Capability Legend

Increased Limitations and Hazards

Decreased Adaptability and Freedom of Choice Users

Land, Capability

	1	2	3	4	5	6	7	8
'Wild Life'	•	•	•	•	•	•	•	•
Forestry	•	•	•	•	•	•	•	
Limited	•	•	•	•	•	•	•	
Moderate	•	•	•	•	•	•		
Intense	•	•	•	•	•			
Limited	•	•	•	•				
Moderate	•	•	•					
Intense	•	•						
Very Intense	•							

### Grazing Cultivation

(c) climatic limitations (e) susceptibility to erosion

(s) soil limitations within the rooting zone (w) excess of water