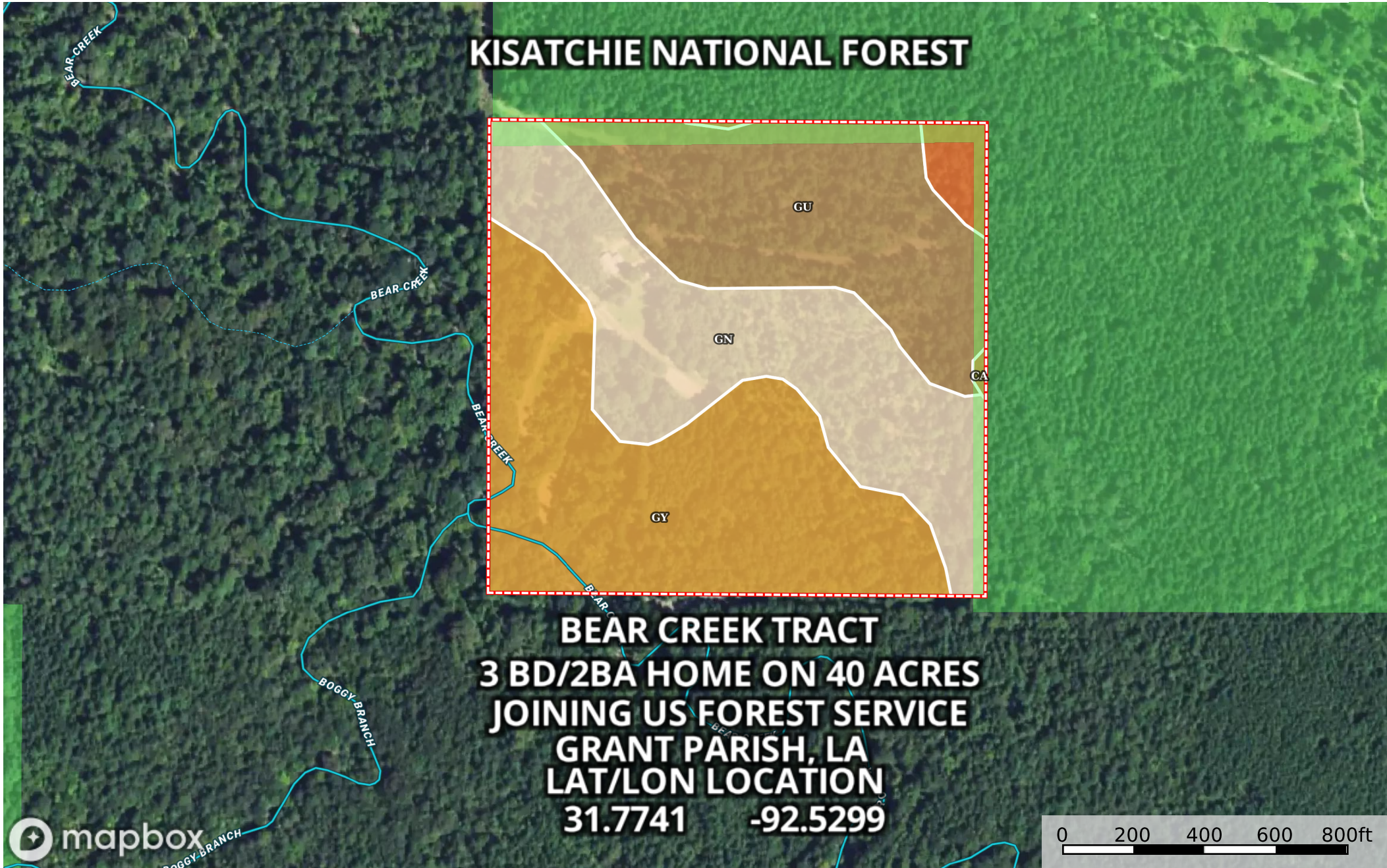


**Bear Creek Tract**  
Winn Parish, Louisiana, 42.62 AC +/-



- Boundary
- Forest Service
- State Land
- Fish and Wildlife
- National Park
- Other
- BLM
- Local Government
- Stream, Intermittent
- River/Creek
- Water Body

|  Boundary 42.52 ac

SOIL CODE	SOIL DESCRIPTION	ACRES	%	CPI	NCCPI	CAP
GY	Guyton and Cascilla soils, frequently flooded	16.28	38.29	0	32	5w
Gn	Glenmora silt loam, 1 to 3 percent slopes	13.28	31.23	0	73	2e
Gu	Guyton silt loam, 0 to 1 percent slopes	11.8	27.75	0	60	3w
Ca	Caddo silt loam	1.16	2.73	0	68	3w
TOTALS		42.52(*)	100%	-	53.56	3.45









(\*) Total acres may differ in the second decimal compared to the sum of each acreage soil. This is due to a round error because we only show the acres of each soil with two decimal.

## Capability Legend

Increased Limitations and Hazards

Decreased Adaptability and Freedom of Choice Users

Land, Capability

								
	1	2	3	4	5	6	7	8
'Wild Life'	•	•	•	•	•	•	•	•
Forestry	•	•	•	•	•	•	•	
Limited	•	•	•	•	•	•	•	
Moderate	•	•	•	•	•	•		
Intense	•	•	•	•	•			
Limited	•	•	•	•				
Moderate	•	•	•					
Intense	•	•						
Very Intense	•							

## Grazing Cultivation

(c) climatic limitations (e) susceptibility to erosion

(s) soil limitations within the rooting zone (w) excess of water